

10 November, 2022

Addendum 5

Columbus County Courthouse

The following addendum shall supersede previous information and does hereby become part of the contract documents.

- The following are known potential bidders
  - Graka Builders, Inc.
  - Waters Contracting
  - Thomas Construction Group, LLC.
  - Muter Construction
  - Metcon, Inc.
  - Mohammad Construction
- Clarification: A 5% bid bond is required; form of bid bond can be AIA bid bond form or any legally recognized bid bond form.
- Clarification: It has come to our attention that in some publications, the budget was projected at \$13 million. This is an untrue statement and grossly exaggerated.
- Specifications, 01020, allowances:
  - New Hardwood Flooring Allowance should read \$8.00/sq ft.
- See attached EBD-1 for Area of Rescue Assistance (ARA) requirements.
- Clarification: Boilers in the Basement area to remain. Contractor to remove any Boiler Room pipping/exhaust flues needed to install new work.
- Clarification: Existing tile grout beds that currently remain shall be removed as required to install new floor finishes.
- Z Channel can be used in lieu of furring channels shown on perimeter walls.
- At the Contractor's option, a space within the existing building can be utilized as the Contractor's field office in lieu of a separate mobile field office.
- Floor jacks shown in crawl space to be Smart Jack Crawl Space Stabilizer or equal.
- Decorative stone in the New Mechanical Yard to be ½" polished multi color pebbles or equal.
- Clarification: In lieu of precast footings in the crawl space for the crawl space jacks, the Contractor can pour in place.
- Sheet P-1: Delete the Plumbing Specifications on sheet P-1. The Plumbing sections in Division 12A of the written specifications are applicable to this project. (Clarification, insulated copper piping shall be required per the project specification manual.)
- Bid form, write in Addendum No. 5 at the bottom of page 2 of the Form of Proposal.

**End of Addendum 5**

DATE 11/10/22

**EBD-1**

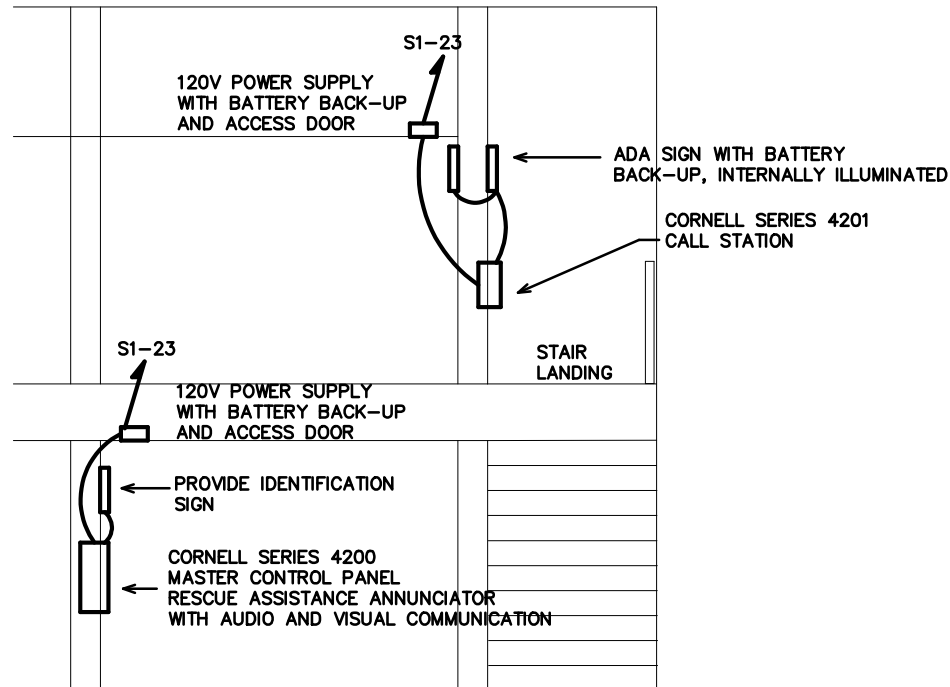
**COLUMBUS COUNTY COURTHOUSE**

113 COURTHOUSE SQ.  
WHITEVILLE, NORTH CAROLINA



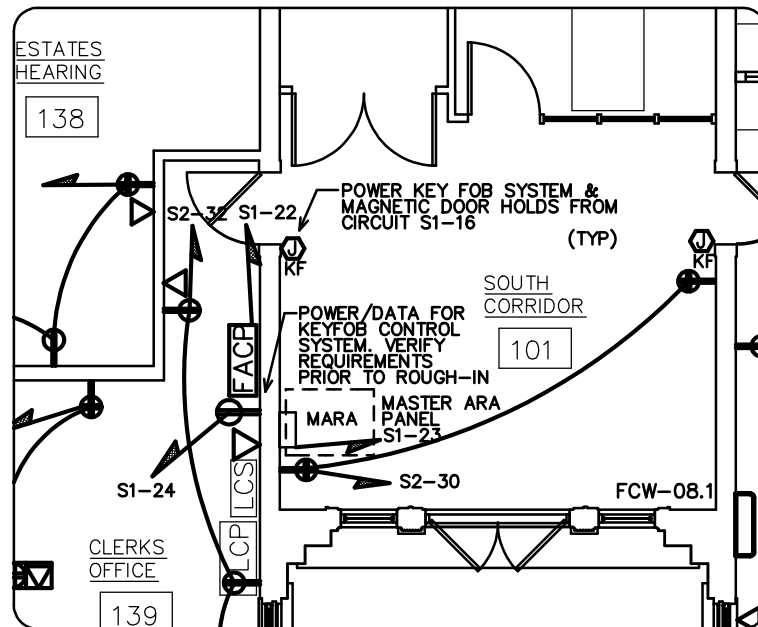
**BAURKE DESIGN GROUP, PA**  
3305-109 DURHAM DRIVE  
RALEIGH, NC 27603  
PHONE: (919) 771-1916  
FAX: (919) 779-0826  
email: benburke@bdcrr.com  
Corp. License # C-2652

NOTE:  
PROVIDE ALL WORK FOR A COMPLETE OPERATING ARA SYSTEM MEETING ALL LOCAL CODES AND ORDINANCES. ALL WORK SHALL MEET NFPA 72 AND THE NCSBC. PROVIDE ALL POWER AND CONTROL WIRING. ALL CONDUIT AND WIRING MUST BE RUN CONCEALED IF POSSIBLE. COORDINATE ALL WORK WITH THE A.H.J. PRIOR TO THE START OF WORK.

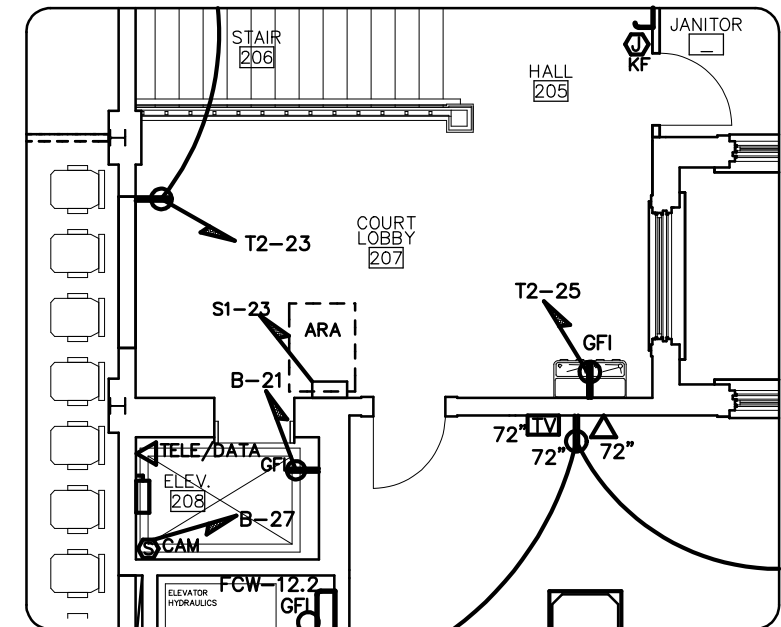


NOTE:  
COORDINATE ACTUAL LOCATION WITH LOCAL INSPECTIONS DEPARTMENT  
LOCATE AT BASE OF STAIR ADJACENT TO EXIT DOOR.

**3 ARA DETAIL**  
BD-I SCALE: NTS



**2 PARTIAL 1ST FLR POWER PLAN**  
BD-I SCALE: 1/8"=1'-0"



**1 PARTIAL 2ND FLR POWER PLAN**  
BD-I SCALE: 1/8"=1'-0"

Columbus Cty Courthouse E3.2		MAKE: CUTLER HAMMER			RATING: 208/120V 3 PHASE 4 WIRE			MLO MAIN CIRCUIT BREAKER				
NEW PANEL- 'S1'		TYPE: PRL1A			MOUNTING: SURFACE			EQUIPMENT GROUND BUS <input checked="" type="checkbox"/> YES <input type="checkbox"/> NO				
		OR APPROVED EQUAL			MINIMUM AIC: VERIFY			SERVICE ENTRY RATED <input type="checkbox"/> YES <input checked="" type="checkbox"/> NO				
LOAD SERVICE	CKT BRKR	WATTS PER PHASE			CKT NO	NEUTRAL A B C	CKT NO	WATTS PER PHASE			CKT BRKR	LOAD SERVICE
		A	B	C				A	B	C		
LTS	20A	500			1		2	10800			100A	PANEL 'S2'
LTS	20A		1024		3		4		10248			
LTS	20A			573	5		6			10080		
LTS	20A	1046			7		8	576			20A	1ST FLR FAN COILS
LTS	20A		920		9		10		576			
LTS	20A			793	11		12			1664	20A	METAL DETECTOR
LTS	20A	801			13		14	1664				
LTS	20A		740		15		16		1800		20A	KEY FOBs
LTS	20A			1058	17		18			1800	20A	HANDICAP DOOR ACTUATOR
LTS	20A	967			19		20	1000			20A	ROLL UP SHUTTER
LTS - EXTERIOR	20A		682		21		22		100		20A	FACP
ARA PANELS	20A			200	23		24			180	20A	KEYFOB CONTROL PANEL
SPARE	20A	---			25		26	---			20A	SPARE
SPARE	20A		---		27		28		---		20A	SPARE
SPARE	20A			---	29		30			---	20A	SPARE
SPARE	20A	---			31		32	---			20A	SPARE
SPARE	20A		---		33		34		---		20A	SPARE
REC	20A			540	35		36			---	20A	SPARE
REC	20A	900			37		38	---			20A	SPARE
REC	20A		900		39		40			---	20A	SPARE
REC	20A			720	41		42			---	20A	SPARE
NOTES	SUB-TOTALS 'B'			4214	4266	3684	200A BUS	14040	12724	13724	SUB-TOTALS 'A'	
							200A LUGS	4214	4266	3684	SUB-TOTALS 'B'	
							200A FEED	18254	16990	17408	GRAND TOTAL	
							VERIFY SIZE	153A	142A	146A	TOTAL CONNECTED LOAD	
											AMPS/PHASE	