

09 March 2021

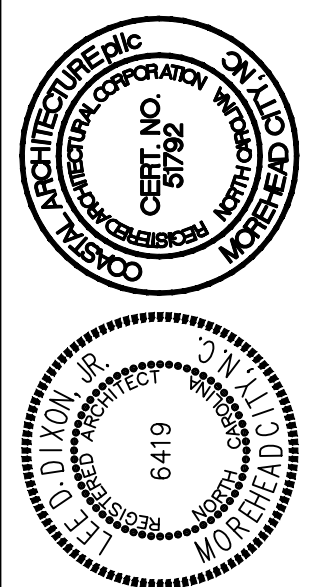
Addendum 1

North Carolina Maritime Museum
Toilet Room Renovations PHIII
Beaufort, NC
SCO# 05-07574-02C

The following addendum shall supersede previous information and does hereby become part of the contract documents.

- Drawings sheet A-1, 6/A-1: Detail cuts indicated as 3/A-2 and 4/A-2 – please see details 3/BD-1 and 4/BD-1.
- Drawing sheet A-1, New Work Key Notes: in key notes references to 3/A-2 and 4/A-2 – please see 3/BD-1 and 4/BD-1.
- Drawings sheet A-1, New Work Key Notes: all key notes that reference A-2 should read BD-1.
- Clarification sheet A-1 Key Notes, key note 9:
The door, exist toilet doors to be reused and replace toilet partitions with Ironwood Manufacturing Wood Veneer, Mahogany Toilet Partitions with custom engraving see also 7/BD-1.

End of Addendum 1



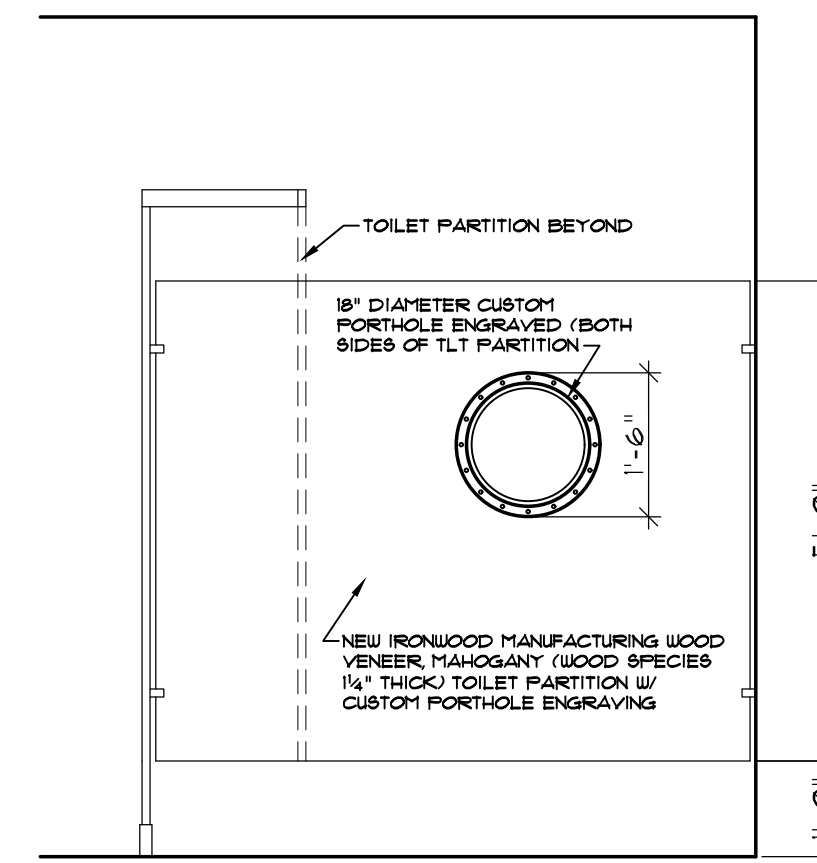
NEW ENLARGED TOILET PLANS AND INTERIOR ELEVATIONS

20017

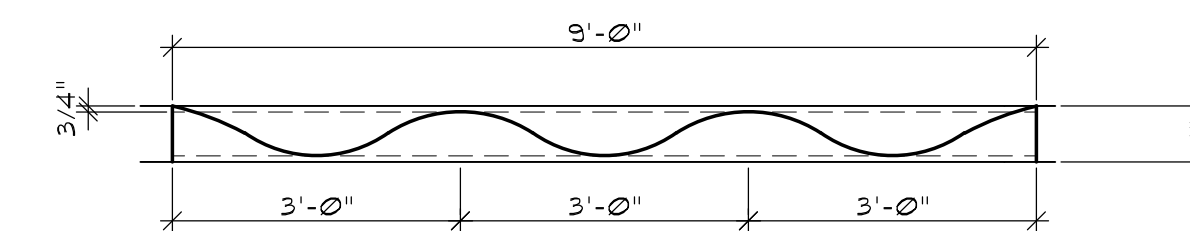
ISSUED: 03/09/21
DWG BY: MLR/MES
CKD BY: LDD

NO.	REVISIONS

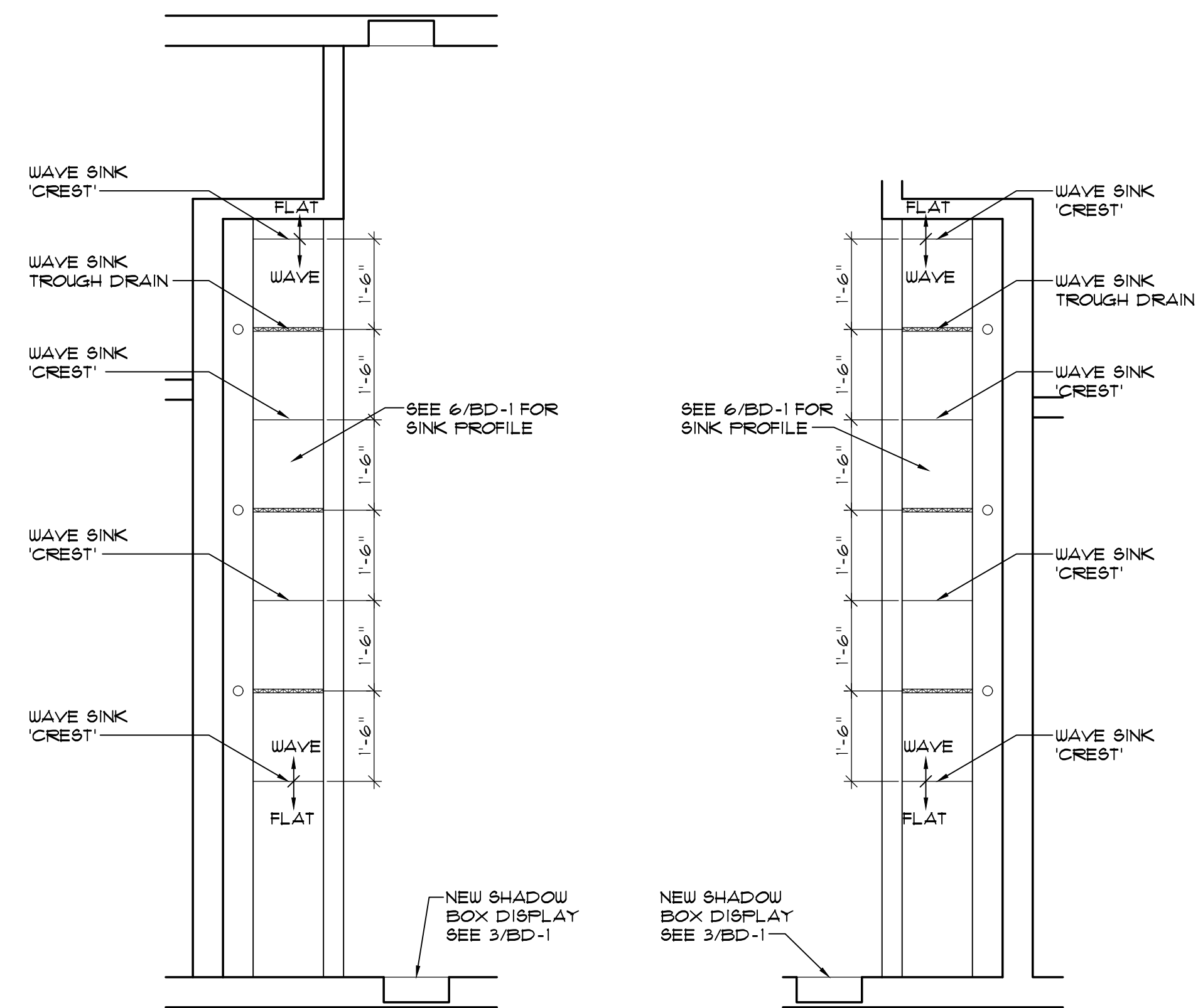
SHEET NO.
BD-1
OF



7 TYPICAL TOILET PARTITION INLAY DETAIL
SCALE: 1/2" = 1'-0"

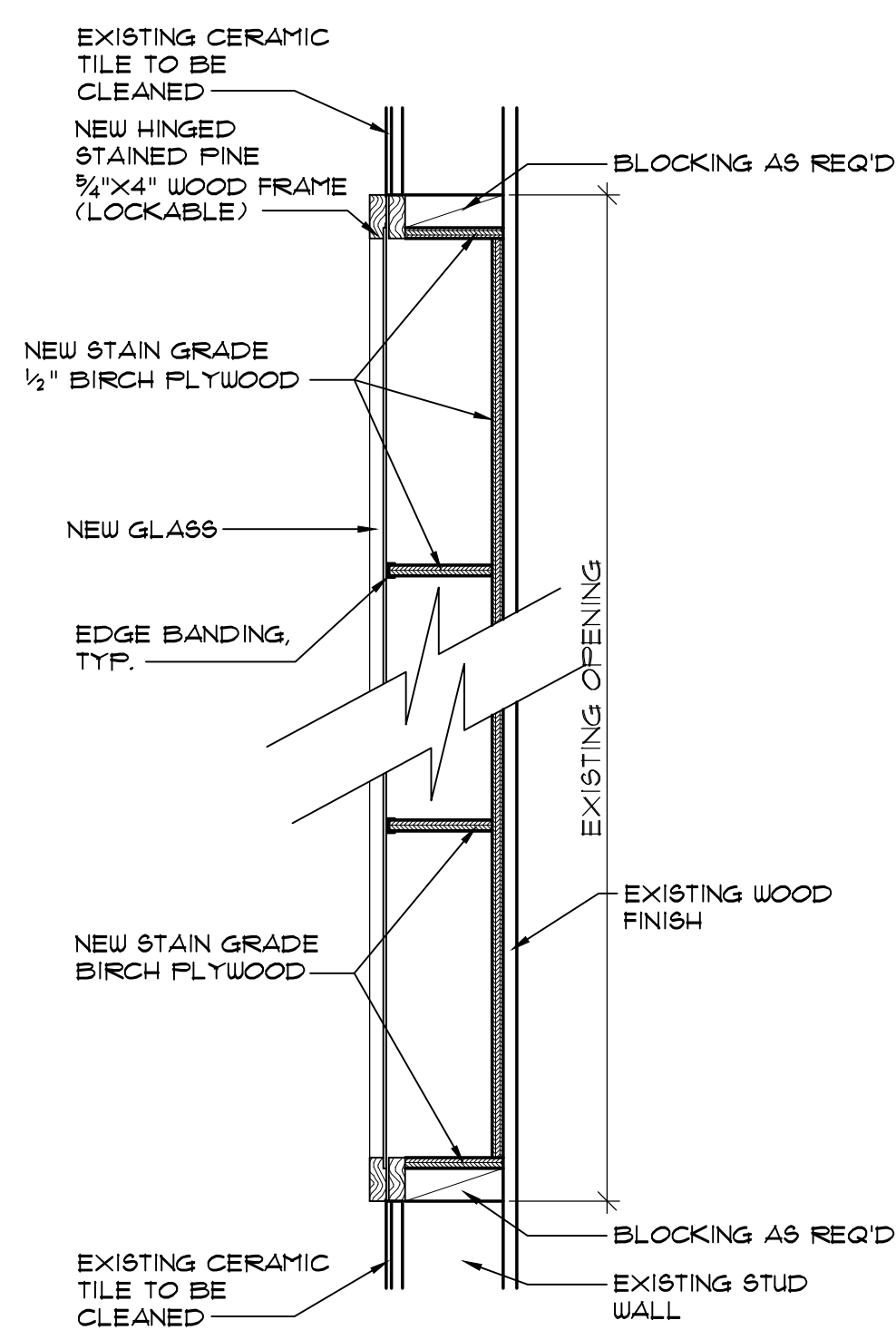


6 WAVE SINK PROFILE
SCALE: 1/2" = 1'-0"

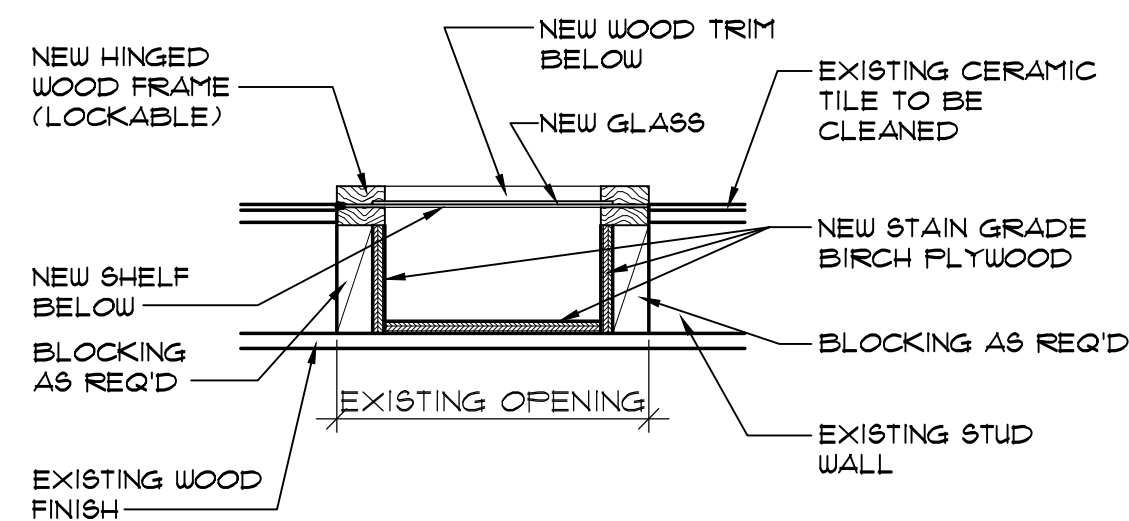


2 ENLARGED PLAN AT WOMENS SINK
SCALE: 1/2" = 1'-0"

1 ENLARGED PLAN AT MENS SINK
SCALE: 1/2" = 1'-0"



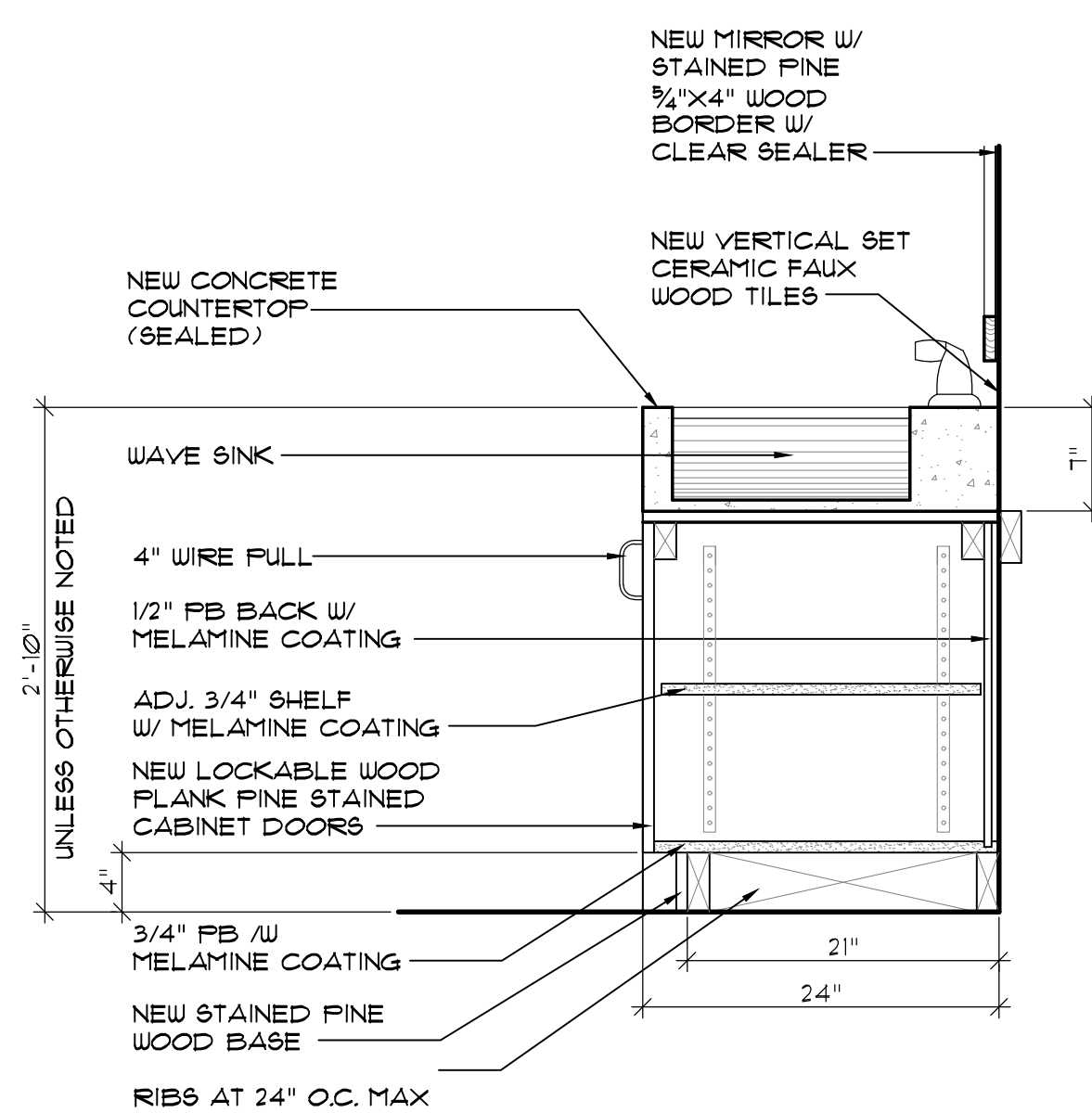
4 SHADOW BOX DISPLAY DETAIL
SCALE: 1/2" = 1'-0"



3 SHADOW BOX DISPLAY DETAIL
SCALE: 1/2" = 1'-0"

GENERAL NOTES:

1. STAINED PINE WOOD FLANK LOCKABLE CABINET DOORS/WHITE MELAMINE COATING INTERIOR
2. CONCEALED HINGES THROUGHOUT
3. 4" SATIN CHROME FULL WIRES
4. ALL SHELIVING ADJUSTABLE, W/ COUNTERSUNK STANDARDS.



5 NEW CABINET DETAIL
SCALE: 1" = 1'-0"