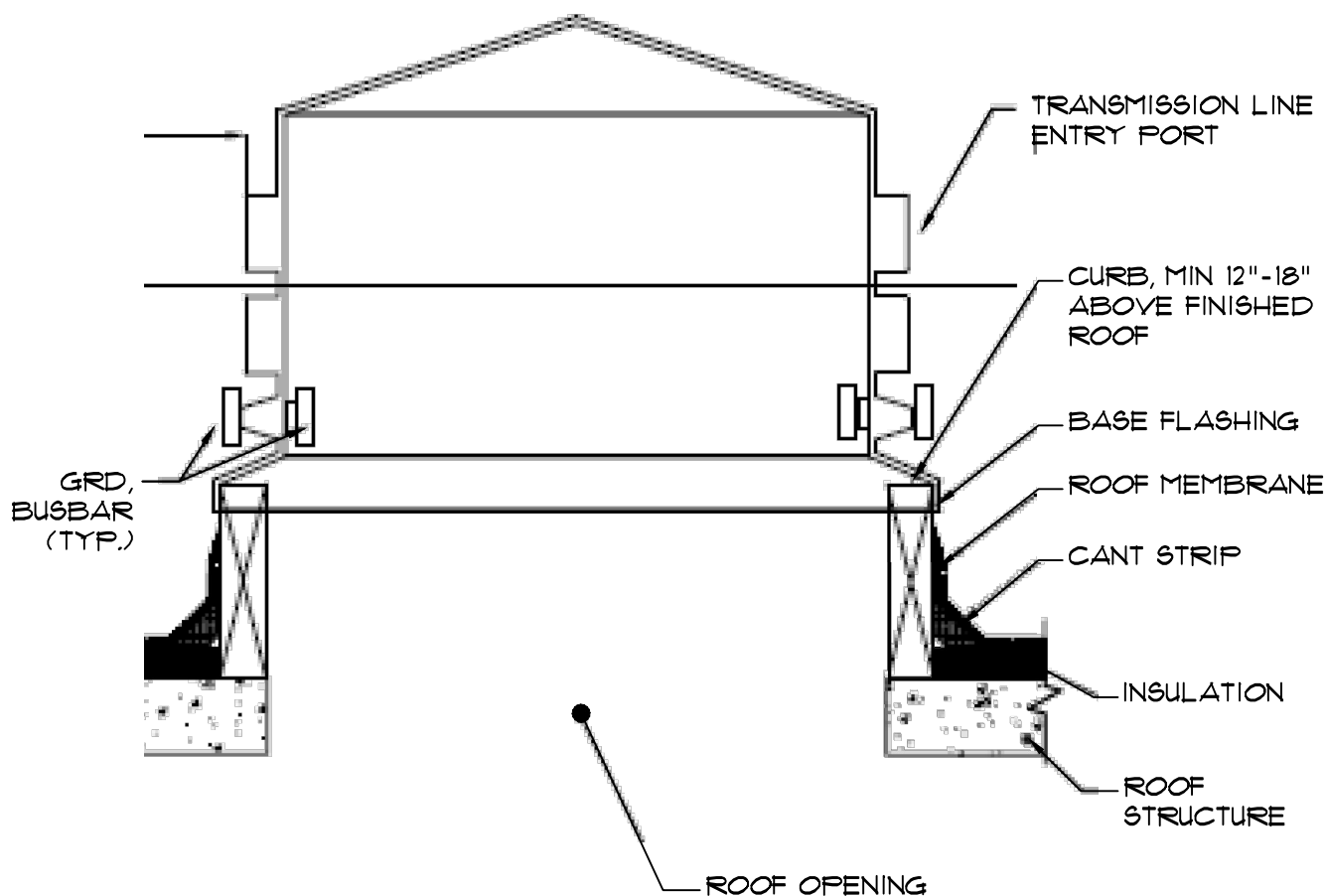


23 May 2024
Addendum No 3
Columbus County 911 Center

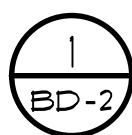
The following addendum shall supersede previous information and does hereby become part of the contract documents.

- See attached BD – 2 for typical installation of antenna portal with curb. Provide angles at all openings through roof. (similar to 6/S1.1)
- Drawings, P2: the electric water heater located in room 103 is to be located in Storage 114 to avoid extensive trenching. Electrical contractor shall also coordinate location of electrical wiring required for new location.
- ATS: provide ASCO model number J07AUSB30400N50V, ATS. ATS must be rated for critical systems operation and for emergency operation. The power must transfer within 10 seconds. The generator is scheduled as an emergency generator not a standby generator.
- Fire Suppression System: It is acceptable to utilize an inert gas fire suppression system equal to the ProInert IG – 541 or ProInert IG – 55 inert gas with multiple ProInert I.G. cylinders as required for a complete operating fire suppression system as required for critical area facilities.
- Sheet E-6: all ground connectors noted shall be tied to the local SBB in the area. All SBB's shall be tied to the PBB's in the area, and the PBB's shall be tied back to the main electrical service grounds. In addition, tie the PBB's to the building steel and copper watermain. See bonding notes on sheet E – 6 for sizes. The PBB's shall tie to the service main and Building steel, waterline with 3/0 ground per NEC for service grounds.
- Plumbing/Electrical: Provide a Stancor SB 20 dewatering sump pump under the raised floor located in an in floor 2' x 2' x 18" concrete sump provided by the GC. Run discharge piping to the exterior of the building. The pump shall be capable of 23 GPM at 25 foot of head. 1/18 hp, 120 V. Provide 15 amp 120 V dedicated circuit to sump pump. Provide local disconnecting means as required per NEC. Breaker shall be GFCI rated provide locking clip.
- Clarification: All 8" concrete block shall be high density block 145 PCF grouted solid with type M grout with # 4 at 48" on center. Epoxy into existing slab 3" penetration at 48" on center.
- Clarification 5/S 1.1: The screens will not align perfectly with the existing joists. When the screen runs parallel to the direction of the joist, the curb tubes are supported by the steel angles spanning between joists as shown on 6/S1.1,

End of Addendum 3



- ROOF MOUNTED ANTENNA PORTAL
- COORDINATE FINAL LOCATION WITH FIELD CONDITIONS
- PROVIDE SHOP DRAWINGS INDICATING SIZE OF OPENING AND ALL MATERIALS TO INSTALL THE TRANSMISSION LINE ENTRY PORT
- INSTALL THE CURB AND SEAL
- THE ROOFING MEMBRANE TO THE CURB AND THE ROOF MATERIALS COORDINATE WITH ROOFING SYSTEM PROVIDOR



DETAIL

N.T.S.

22001

ISSUED: 05/22/24

DWG BY: SKC

CKD BY: LDD

REVISIONS

SHEET NO.

BD-2

OF 1